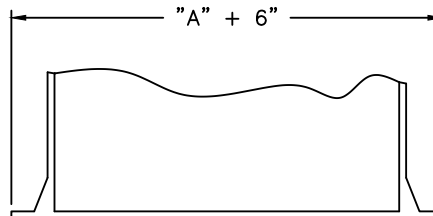
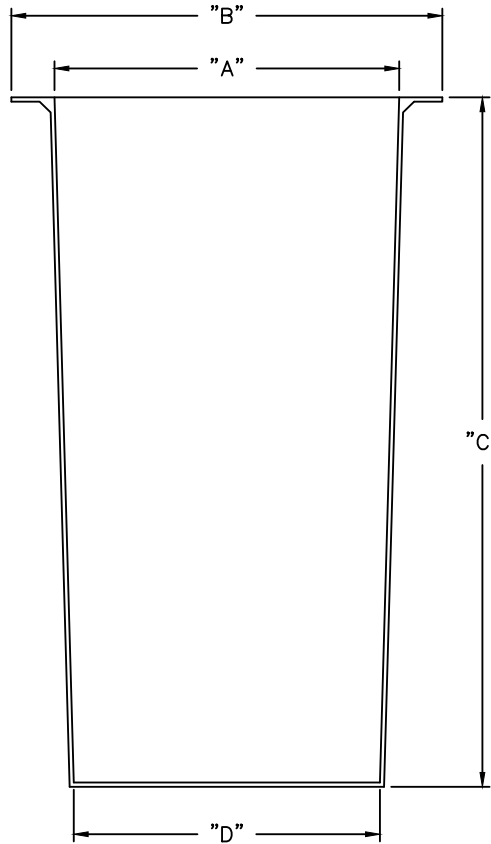
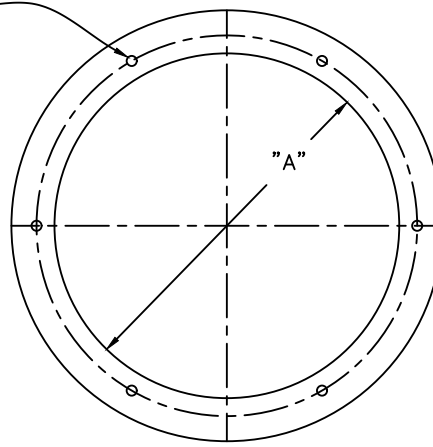


(6) 3/8"-16 TAPPED S.S. INSERTS ON "E" BOLT CIRCLE  
 NOTE: 18" DIA. BASIN ONLY HAS 4 TAPPED S.S. INSERTS



BOTTOM ANTI-FLOATATION FLANGE  
 (WHEN SPECIFIED)

DIMENSIONAL DATA				
"A"	"B"	"C"	"D"	"E"
18"	24"	30"	16.75"	21.5"
18"	24"	36"	16.5"	21.5"
18"	24"	48"	16"	21.5"
24"	28"	36"	22.0"	26.5"
24"	28"	48"	21.3"	26.5"
24"	28"	54"	21.0"	26.5"
24"	28"	60"	20.7"	26.5"
24"	28"	72"	20.0"	26.5"
30"	34"	36"	28.5"	32.5"
30"	34"	48"	28.0"	32.5"
30"	34"	60"	27.5"	32.5"
30"	34"	72"	27.0"	32.5"
36"	40"	36"	34.5"	38.5"
36"	40"	48"	34.0"	38.5"
36"	40"	60"	33.5"	38.5"
36"	40"	72"	33.0"	38.5"
48"	54"	48"	46.0"	51"
48"	54"	60"	45.5"	51"
48"	54"	72"	45.0"	51"



STEELE PLASTICS, LLC  
 1280 Sturgis Road  
 Conway, AR 72034  
 (501) 327-5122 Fax (501) 327-0807

TITLE FIBERGLASS TAPERED BASIN

PROJECT

JOB NO.

P.O. NO.

CUSTOMER

DWG. NO.

401T-R2