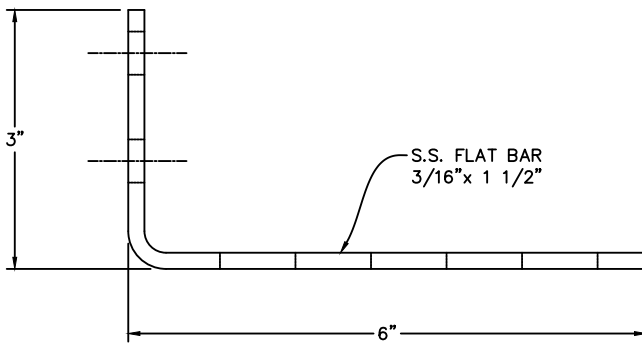
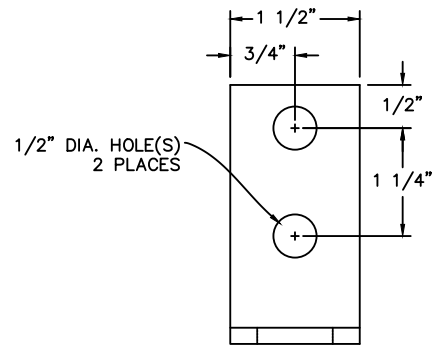


7/8" DIA. HOLES
(3 PLACES)

TOP VIEW



SIDE VIEW



FRONT VIEW

NOTE: ASSEMBLY INCLUDES,
 (3) 1/2" CORD GRIPS - P/N 700142
 (3) 1/2" CONDUIT NUT - P/N 700622



STEELE PLASTICS, INC.
 1280 Sturgis Rd.
 Conway, AR 72034
 (501) 327-5122 Fax (501) 327-0807

TITLE STAINLESS STEEL 3 HOLE MFS FLOAT BRACKET

PROJECT

JOB NO.

PART NO.

CUSTOMER

DWG. NO.

FLTBKT-3