

10" DIA. INSPECTION PLATE, THIS PLATE CAN BE TAPPED TO ACCEPT MFS CORD GRIPS. SEE DRAWING NO. LCM

ø8" INSPECTION OPENING

(6) ø3/4" HOLES EQUALLY SPACED ON A "D" B.C.

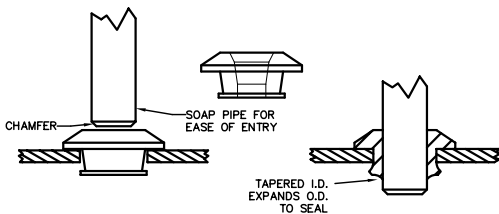
3/8"-16 S.S. BOLTS TYP. 4 PLACES

"G" DISCHARGE CONNECTION (SPECIFY)

"E" PUMP REMOVAL OPENING DIAMETER

PUMP CORD GROMMET

PIPE GROMMET DETAIL



DISCHARGE / VENT CROSS SECTION DETAIL

DIMENSIONAL DATA

BASIN I.D.	"B"	Cover Thickness	"D"	"E"	"F"	"G"	"H"
24"	30"	1/4"	26 1/2"	14"	16"	1 1/4", 1 1/2", 2", 3", 4"	1 1/4", 1 1/2", 2", 3"
30"	36"	1/4"	32 1/2"	16"	18"	1 1/4", 1 1/2", 2", 3", 4"	1 1/4", 1 1/2", 2", 3", 4"
36"	42"	1/4"	38 1/2"	16"	18"	1 1/4", 1 1/2", 2", 3", 4"	1 1/4", 1 1/2", 2", 3", 4"
42"	48"	1/4"	44 1/2"	18"	20"	1 1/4", 1 1/2", 2", 3", 4"	1 1/4", 1 1/2", 2", 3", 4"
48"	54"	1/4"	51"	20"	22"	1 1/4", 1 1/2", 2", 3", 4"	1 1/4", 1 1/2", 2", 3", 4"
54"	60"	3/8"	57"	26"	28"	1 1/4", 1 1/2", 2", 3", 4"	1 1/4", 1 1/2", 2", 3", 4"
60"	66"	3/8"	63"	26"	28"	1 1/4", 1 1/2", 2", 3", 4"	1 1/4", 1 1/2", 2", 3", 4"

NOTES:

- COVER SHALL BE PAINTED WITH GREEN INDUSTRIAL GRADE POLYURETHANE ENAMEL OR OPTIONAL BLACK COAL TAR EPOXY.
- PUMP COVER PLATE AND INSPECTION PLATE SHALL BE 1/4" THICK STEEL.



STEELE PLASTICS, INC.
P.O. Box 1076 / 1280 Sturgis Rd.
Conway, AR 72033
(501) 327-5122 Fax (501) 327-0807

TITLE SIMPLEX STEEL PUMP COVER

PROJECT

CUSTOMER

JOB NO.

P.O. NO.

DWG. NO.

CVSSIM