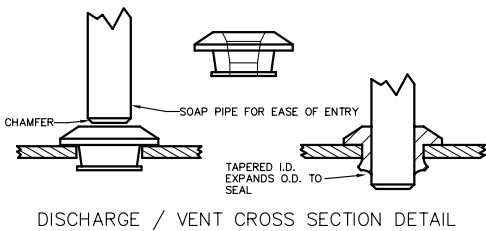


NOTES:

1. COVER SHALL BE PAINTED WITH GREEN INDUSTRIAL GRADE POLYURETHANE ENAMEL OR OPTIONAL BLACK COAL TAR EPOXY.
2. 300 PSF LOAD RATING.
3. HATCH IS, DESIGNED FOR MAX PUMP ACCESS, SUPPORTED BY TWO STEEL ANGLE BRACES.
NOTE - CAN NOT BE MADE VAPOR TIGHT.

PIPE GROMMET DETAIL



DIMENSIONAL DATA

BASIN I.D.	"B"	Cover Thickness	"D"	"E"	"F"	"G"	"H"
30"	36"	1/4"	32 1/2"	24"	20"	18"	1 1/4", 1 1/2", 2", 3"
36"	42"	1/4"	38 1/2"	30"	22"	20"	1 1/4", 1 1/2", 2", 3"
42"	48"	1/4"	44 1/2"	36"	24"	22"	1 1/4", 1 1/2", 2", 3", 4"
48"	54"	1/4"	51"	40"	30"	28"	1 1/4", 1 1/2", 2", 3", 4"



STEELE PLASTICS, INC.
P.O. Box 1076 / 1280 Sturgis Rd.
Conway, AR 72033
(501) 327-5122 Fax (501) 327-0807

TITLE SINGLE DOOR STEEL HATCH COVER

PROJECT

JOB NO.

P.O. NO.

CUSTOMER

DWG. NO.

CVSHTHSD