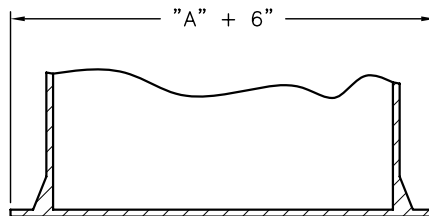
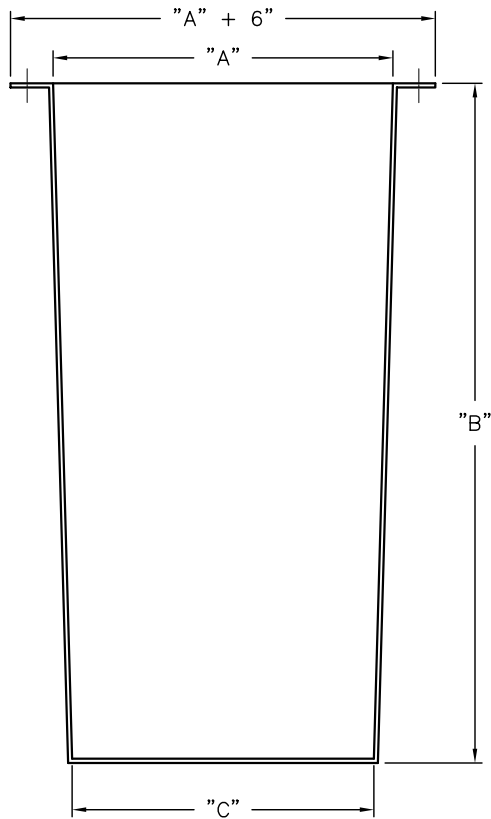
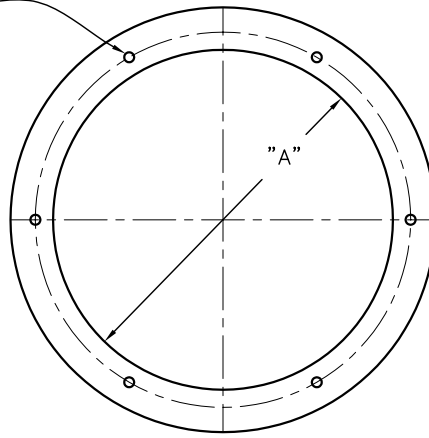


(6) 3/8"-16 TAPPED S.S. INSERTS ON "D" BOLT CIRCLE
 NOTE: 18" DIA. BASIN ONLY HAS 4 TAPPED S.S. INSERTS



BOTTOM ANTI-FLOATATION FLANGE
 (WHEN SPECIFIED)

DIMENSIONAL DATA			
"A"	"B"	"C"	"D"
18"	30"	16.75"	21.5"
18"	36"	16.5"	21.5"
18"	48"	16"	21.5"
24"	36"	22.0"	26.5"
24"	48"	21.3"	26.5"
24"	54"	21.0"	26.5"
24"	60"	20.7"	26.5"
24"	72"	20.0"	26.5"
30"	36"	28.5"	32.5"
30"	48"	28.0"	32.5"
30"	60"	27.5"	32.5"
30"	72"	27.0"	32.5"
36"	36"	34.5"	38.5"
36"	48"	34.0"	38.5"
36"	60"	33.5"	38.5"
36"	72"	33.0"	38.5"
48"	48"	46.0"	51"
48"	60"	45.5"	51"
48"	72"	45.0"	51"



STEELE PLASTICS, INC.
 P.O. Box 1076 / 1280 Sturgis Rd.
 Conway, AR 72033
 (501) 327-5122 Fax (501) 327-0807

TITLE		FIBERGLASS TAPERED BASIN	
PROJECT		JOB NO.	
CUSTOMER		P.O. NO.	
		DWG. NO. 401T	